



IBIRACU

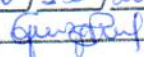
Prefeitura Municipal de Ibiracú

Estado do Espírito Santo

Publicado no
DOM/ES N.º 1417
Em 20 / 12 / 2019

LEI N.º 4.031/2019

CÂMARA MUNICIPAL DE IBIRACU
Publicado no quadro de aviso conforme
artigo 75 da Lei Orgânica Municipal.

Em, 20 / 12 / 2019
Ass. 

**"Altera para ampliar o
perímetro urbano da Sede
e do Distrito de Pendanga
do Município de Ibiracú.**

O Prefeito Municipal de Ibiracú, Estado do Espírito Santo,
no uso de suas atribuições legais;

Faço saber que a Câmara Municipal aprovou e eu sanciono
a seguinte Lei:

Art. 1º - O Mapa e Memorial Descritivo, identificadores
das zonas urbanas denominadas Sede e Distrito de Pendanga, do
Município de Ibiracú, constantes do Anexo I, da Lei Municipal n.º 3.029,
de 13 de agosto de 2009, alterada pela Lei Municipal n.º 3.905, de 12
de junho de 2018, passam a vigorar acrescidos das áreas identificadas
no Mapa e Memorial Descritivo constantes dos Anexos 01 e 02 da
presente Lei.

Art. 2º. Esta Lei entra em vigor na data de sua publicação.

Gabinete do Prefeito do Município de Ibiracú/ES, em 20 de
novembro de 2019.


EDUARDO MAROZZI ZANOTTI
Prefeito Municipal

Registrada e publicada na Secretaria Municipal de Administração em 20
de novembro de 2019.


LETICIA ROZINDO SARCINELI PEREIRA
Secretária Municipal de Administração e Recursos Humanos



Prefeitura Municipal de Ibiracu

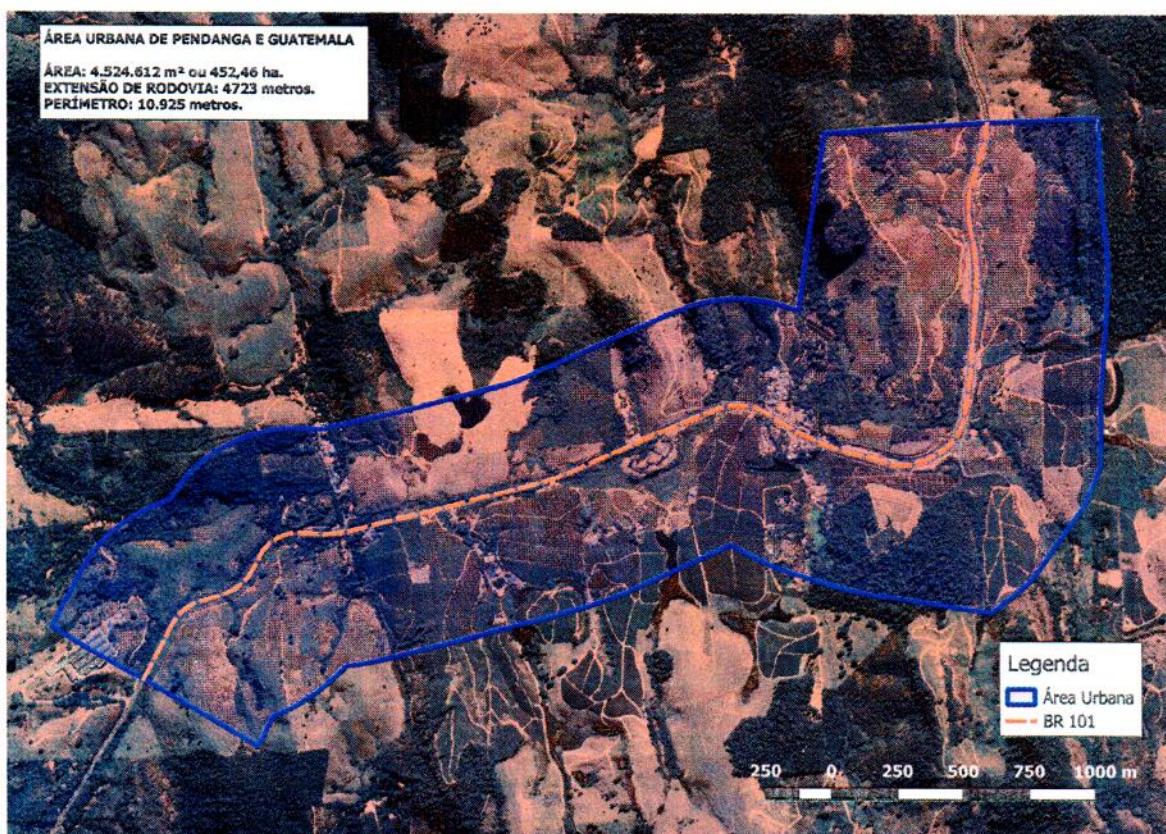
Estado do Espírito Santo

ANEXO 01

MAPA

Perímetro 10.925m

ZONA URBANA QUE COMPREENDE BAIRRO GUATEMALA E DISTRITO DE PENDANGA



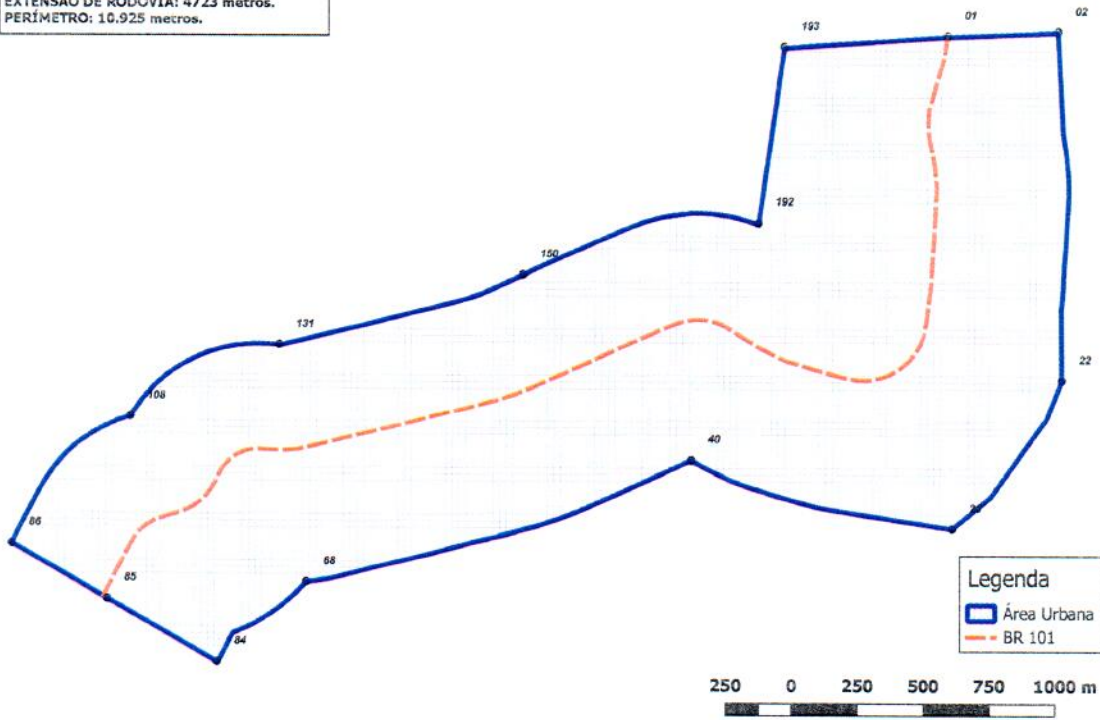


Prefeitura Municipal de Ibiracu

Estado do Espírito Santo

ÁREA URBANA DE PENDANGA E GUATEMALA

ÁREA: 4.524.612 m² ou 452,46 ha.
EXTENSÃO DE RODOVIA: 4723 metros.
PERÍMETRO: 10.925 metros.





Prefeitura Municipal de Ibiracú

Estado do Espírito Santo

ANEXO 01

MEMORIAL DESCRITIVO

Perímetro 10.925m

Coordenadas SISTEMA – UTM/DATUM – SIRGAS 2000/ZONA - 24K

ZONA URBANA QUE COMPREENDE BAIRRO GUATEMALA E DISTRITO DE PENDANGA

COORDENADAS DA ÁREA URBANA DE PENDANGA E GUATEMALA					
PONTOS	SISTEMA	DATUM	ZONA	EASTING	NORTING
1	UTM	SIRGAS 2000	24K	355269,210	7804057,219
2	UTM	SIRGAS 2000	24K	355688,439	7804073,310
3	UTM	SIRGAS 2000	24K	355707,052	7803696,014
4	UTM	SIRGAS 2000	24K	355708,719	7803687,388
5	UTM	SIRGAS 2000	24K	355716,370	7803638,643
6	UTM	SIRGAS 2000	24K	355720,657	7803603,025
7	UTM	SIRGAS 2000	24K	355727,173	7803525,553
8	UTM	SIRGAS 2000	24K	355728,170	7803456,047
9	UTM	SIRGAS 2000	24K	355716,968	7803253,427
10	UTM	SIRGAS 2000	24K	355715,553	7803234,416
11	UTM	SIRGAS 2000	24K	355711,675	7803192,998
12	UTM	SIRGAS 2000	24K	355710,956	7803178,621
13	UTM	SIRGAS 2000	24K	355710,906	7803177,635
14	UTM	SIRGAS 2000	24K	355709,248	7803145,739
15	UTM	SIRGAS 2000	24K	355707,952	7803118,575
16	UTM	SIRGAS 2000	24K	355707,084	7803104,532
17	UTM	SIRGAS 2000	24K	355706,730	7803099,864
18	UTM	SIRGAS 2000	24K	355706,637	7803098,060
19	UTM	SIRGAS 2000	24K	355703,458	7803061,804
20	UTM	SIRGAS 2000	24K	355700,319	7803036,598
21	UTM	SIRGAS 2000	24K	355699,843	7803032,886
22	UTM	SIRGAS 2000	24K	355702,047	7802759,471
23	UTM	SIRGAS 2000	24K	355644,597	7802613,362
24	UTM	SIRGAS 2000	24K	355433,969	7802321,457



Prefeitura Municipal de Ibiracú

Estado do Espírito Santo

25	UTM	SIRGAS 2000	24K	355286,570	7802199,999
26	UTM	SIRGAS 2000	24K	354830,801	7802270,701
27	UTM	SIRGAS 2000	24K	354796,930	7802276,766
28	UTM	SIRGAS 2000	24K	354757,737	7802285,420
29	UTM	SIRGAS 2000	24K	354727,405	7802293,406
30	UTM	SIRGAS 2000	24K	354722,063	7802294,844
31	UTM	SIRGAS 2000	24K	354632,355	7802319,529
32	UTM	SIRGAS 2000	24K	354617,615	7802323,830
33	UTM	SIRGAS 2000	24K	354503,967	7802358,890
34	UTM	SIRGAS 2000	24K	354447,957	7802379,915
35	UTM	SIRGAS 2000	24K	354441,564	7802382,762
36	UTM	SIRGAS 2000	24K	354427,974	7802389,060
37	UTM	SIRGAS 2000	24K	354373,543	7802415,280
38	UTM	SIRGAS 2000	24K	354360,691	7802421,701
39	UTM	SIRGAS 2000	24K	354317,192	7802444,217
40	UTM	SIRGAS 2000	24K	354296,935	7802455,901
41	UTM	SIRGAS 2000	24K	354285,885	7802451,001
42	UTM	SIRGAS 2000	24K	354029,902	7802333,826
43	UTM	SIRGAS 2000	24K	354021,495	7802330,071
44	UTM	SIRGAS 2000	24K	353870,608	7802264,336
45	UTM	SIRGAS 2000	24K	353848,714	7802255,407
46	UTM	SIRGAS 2000	24K	353812,133	7802241,489
47	UTM	SIRGAS 2000	24K	353798,850	7802236,649
48	UTM	SIRGAS 2000	24K	353772,843	7802227,587
49	UTM	SIRGAS 2000	24K	353767,051	7802225,608
50	UTM	SIRGAS 2000	24K	353726,462	7802212,020
51	UTM	SIRGAS 2000	24K	353696,130	7802202,923
52	UTM	SIRGAS 2000	24K	353569,361	7802169,240
53	UTM	SIRGAS 2000	24K	353555,795	7802165,837
54	UTM	SIRGAS 2000	24K	353478,285	7802147,547
55	UTM	SIRGAS 2000	24K	353293,272	7802098,732
56	UTM	SIRGAS 2000	24K	353283,891	7802096,354
57	UTM	SIRGAS 2000	24K	353111,809	7802054,495
58	UTM	SIRGAS 2000	24K	353091,659	7802049,418
59	UTM	SIRGAS 2000	24K	353038,453	7802035,577
60	UTM	SIRGAS 2000	24K	353035,283	7802034,763
61	UTM	SIRGAS 2000	24K	352991,044	7802023,563
62	UTM	SIRGAS 2000	24K	352977,691	7802019,953
63	UTM	SIRGAS 2000	24K	352956,983	7802014,826
64	UTM	SIRGAS 2000	24K	352932,561	7802009,330
65	UTM	SIRGAS 2000	24K	352909,651	7802004,734



Prefeitura Municipal de Ibiracu

Estado do Espirito Santo

66	UTM	SIRGAS 2000	24K	352885,736	7802000,515
67	UTM	SIRGAS 2000	24K	352836,430	7801994,324
68	UTM	SIRGAS 2000	24K	352836,102	7801994,299
69	UTM	SIRGAS 2000	24K	352833,640	7801991,185
70	UTM	SIRGAS 2000	24K	352823,915	7801980,460
71	UTM	SIRGAS 2000	24K	352809,378	7801965,094
72	UTM	SIRGAS 2000	24K	352796,490	7801952,037
73	UTM	SIRGAS 2000	24K	352742,284	7801904,514
74	UTM	SIRGAS 2000	24K	352723,767	7801890,506
75	UTM	SIRGAS 2000	24K	352712,115	7801881,953
76	UTM	SIRGAS 2000	24K	352700,422	7801873,628
77	UTM	SIRGAS 2000	24K	352641,414	7801837,491
78	UTM	SIRGAS 2000	24K	352614,857	7801823,658
79	UTM	SIRGAS 2000	24K	352557,985	7801798,892
80	UTM	SIRGAS 2000	24K	352553,735	7801790,517
81	UTM	SIRGAS 2000	24K	352520,707	7801725,323
82	UTM	SIRGAS 2000	24K	352518,816	7801721,628
83	UTM	SIRGAS 2000	24K	352512,023	7801708,492
84	UTM	SIRGAS 2000	24K	352498,150	7801689,637
85	UTM	SIRGAS 2000	24K	352081,442	7801929,011
86	UTM	SIRGAS 2000	24K	351720,138	7802136,560
87	UTM	SIRGAS 2000	24K	351750,964	7802197,406
88	UTM	SIRGAS 2000	24K	351762,843	7802220,815
89	UTM	SIRGAS 2000	24K	351768,791	7802232,087
90	UTM	SIRGAS 2000	24K	351784,263	7802260,309
91	UTM	SIRGAS 2000	24K	351796,359	7802283,281
92	UTM	SIRGAS 2000	24K	351811,768	7802313,381
93	UTM	SIRGAS 2000	24K	351821,910	7802331,963
94	UTM	SIRGAS 2000	24K	351842,922	7802368,151
95	UTM	SIRGAS 2000	24K	351882,178	7802424,122
96	UTM	SIRGAS 2000	24K	351896,376	7802441,075
97	UTM	SIRGAS 2000	24K	351926,999	7802473,737
98	UTM	SIRGAS 2000	24K	351938,638	7802484,835
99	UTM	SIRGAS 2000	24K	351960,810	7802504,462
100	UTM	SIRGAS 2000	24K	351976,488	7802517,338
101	UTM	SIRGAS 2000	24K	352034,505	7802556,996
102	UTM	SIRGAS 2000	24K	352058,485	7802570,461
103	UTM	SIRGAS 2000	24K	352069,405	7802576,372
104	UTM	SIRGAS 2000	24K	352081,977	7802582,927
105	UTM	SIRGAS 2000	24K	352121,638	7802600,931
106	UTM	SIRGAS 2000	24K	352139,655	7802607,953



Prefeitura Municipal de Ibiracu

Estado do Espirito Santo

107	UTM	SIRGAS 2000	24K	352168,601	7802617,977
108	UTM	SIRGAS 2000	24K	352169,380	7802618,213
109	UTM	SIRGAS 2000	24K	352216,079	7802685,536
110	UTM	SIRGAS 2000	24K	352227,495	7802698,708
111	UTM	SIRGAS 2000	24K	352236,755	7802709,027
112	UTM	SIRGAS 2000	24K	352251,294	7802724,672
113	UTM	SIRGAS 2000	24K	352297,254	7802766,966
114	UTM	SIRGAS 2000	24K	352311,643	7802778,267
115	UTM	SIRGAS 2000	24K	352349,711	7802804,745
116	UTM	SIRGAS 2000	24K	352368,000	7802815,952
117	UTM	SIRGAS 2000	24K	352414,014	7802840,182
118	UTM	SIRGAS 2000	24K	352433,965	7802849,083
119	UTM	SIRGAS 2000	24K	352460,132	7802859,667
120	UTM	SIRGAS 2000	24K	352471,777	7802863,905
121	UTM	SIRGAS 2000	24K	352520,255	7802878,153
122	UTM	SIRGAS 2000	24K	352533,122	7802881,067
123	UTM	SIRGAS 2000	24K	352556,644	7802885,656
124	UTM	SIRGAS 2000	24K	352568,210	7802887,555
125	UTM	SIRGAS 2000	24K	352616,974	7802892,518
126	UTM	SIRGAS 2000	24K	352624,059	7802892,802
127	UTM	SIRGAS 2000	24K	352639,080	7802893,591
128	UTM	SIRGAS 2000	24K	352690,597	7802892,972
129	UTM	SIRGAS 2000	24K	352703,453	7802891,987
130	UTM	SIRGAS 2000	24K	352721,428	7802891,352
131	UTM	SIRGAS 2000	24K	352732,984	7802890,777
132	UTM	SIRGAS 2000	24K	352745,123	7802889,996
133	UTM	SIRGAS 2000	24K	352747,385	7802890,166
134	UTM	SIRGAS 2000	24K	352751,055	7802890,992
135	UTM	SIRGAS 2000	24K	352760,046	7802893,423
136	UTM	SIRGAS 2000	24K	352766,264	7802895,050
137	UTM	SIRGAS 2000	24K	352813,127	7802906,915
138	UTM	SIRGAS 2000	24K	352866,928	7802920,911
139	UTM	SIRGAS 2000	24K	352869,910	7802921,674
140	UTM	SIRGAS 2000	24K	352893,913	7802927,722
141	UTM	SIRGAS 2000	24K	352897,097	7802928,510
142	UTM	SIRGAS 2000	24K	353067,409	7802969,938
143	UTM	SIRGAS 2000	24K	353255,022	7803019,440
144	UTM	SIRGAS 2000	24K	353265,204	7803021,984
145	UTM	SIRGAS 2000	24K	353343,652	7803040,495
146	UTM	SIRGAS 2000	24K	353452,766	7803069,488
147	UTM	SIRGAS 2000	24K	353479,015	7803078,275



Prefeitura Municipal de Ibiracu

Estado do Espírito Santo

148	UTM	SIRGAS 2000	24K	353497,369	7803084,671
149	UTM	SIRGAS 2000	24K	353519,822	7803093,214
150	UTM	SIRGAS 2000	24K	353658,659	7803153,699
151	UTM	SIRGAS 2000	24K	353913,990	7803270,576
152	UTM	SIRGAS 2000	24K	353918,315	7803272,524
153	UTM	SIRGAS 2000	24K	354038,162	7803325,674
154	UTM	SIRGAS 2000	24K	354056,854	7803333,404
155	UTM	SIRGAS 2000	24K	354100,650	7803350,232
156	UTM	SIRGAS 2000	24K	354115,077	7803355,460
157	UTM	SIRGAS 2000	24K	354128,068	7803359,887
158	UTM	SIRGAS 2000	24K	354149,176	7803366,437
159	UTM	SIRGAS 2000	24K	354156,817	7803368,578
160	UTM	SIRGAS 2000	24K	354185,780	7803375,341
161	UTM	SIRGAS 2000	24K	354188,415	7803376,000
162	UTM	SIRGAS 2000	24K	354189,109	7803376,118
163	UTM	SIRGAS 2000	24K	354190,936	7803376,545
164	UTM	SIRGAS 2000	24K	354201,283	7803378,488
165	UTM	SIRGAS 2000	24K	354201,337	7803378,196
166	UTM	SIRGAS 2000	24K	354215,713	7803380,639
167	UTM	SIRGAS 2000	24K	354224,292	7803382,458
168	UTM	SIRGAS 2000	24K	354231,529	7803383,326
169	UTM	SIRGAS 2000	24K	354249,045	7803386,302
170	UTM	SIRGAS 2000	24K	354260,833	7803387,382
171	UTM	SIRGAS 2000	24K	354260,882	7803386,847
172	UTM	SIRGAS 2000	24K	354295,350	7803390,981
173	UTM	SIRGAS 2000	24K	354303,180	7803391,215
174	UTM	SIRGAS 2000	24K	354327,173	7803391,210
175	UTM	SIRGAS 2000	24K	354340,150	7803390,818
176	UTM	SIRGAS 2000	24K	354354,692	7803390,114
177	UTM	SIRGAS 2000	24K	354366,080	7803389,354
178	UTM	SIRGAS 2000	24K	354372,722	7803388,856
179	UTM	SIRGAS 2000	24K	354385,369	7803387,800
180	UTM	SIRGAS 2000	24K	354388,440	7803387,532
181	UTM	SIRGAS 2000	24K	354395,778	7803386,863
182	UTM	SIRGAS 2000	24K	354433,169	7803381,664
183	UTM	SIRGAS 2000	24K	354441,249	7803380,149
184	UTM	SIRGAS 2000	24K	354466,928	7803373,648
185	UTM	SIRGAS 2000	24K	354466,982	7803373,875
186	UTM	SIRGAS 2000	24K	354477,267	7803371,447
187	UTM	SIRGAS 2000	24K	354511,781	7803361,649
188	UTM	SIRGAS 2000	24K	354518,722	7803359,337



Prefeitura Municipal de Ibiracu

Estado do Espirito Santo

189	UTM	SIRGAS 2000	24K	354531,260	7803354,929
190	UTM	SIRGAS 2000	24K	354538,009	7803352,429
191	UTM	SIRGAS 2000	24K	354537,833	7803351,955
192	UTM	SIRGAS 2000	24K	354551,865	7803351,320
193	UTM	SIRGAS 2000	24K	354649,141	7804014,964



Prefeitura Municipal de Ibiracu

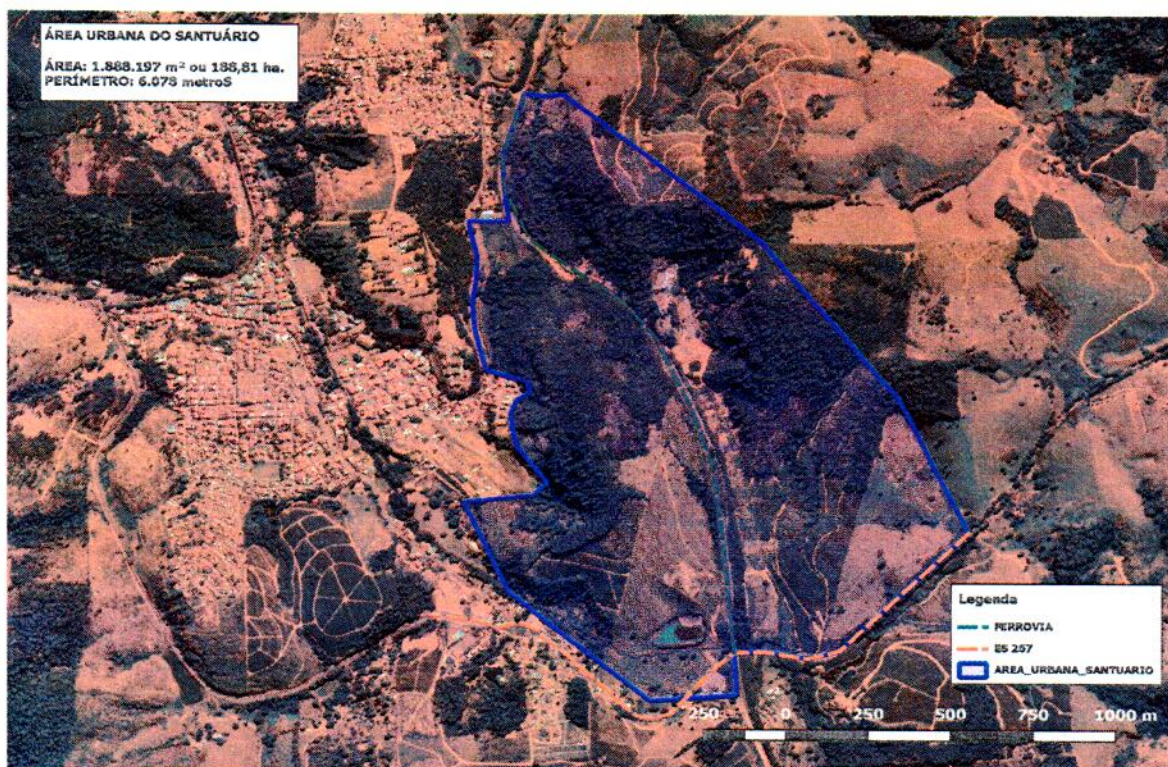
Estado do Espírito Santo

ANEXO 02

MAPA

Perímetro 6.078m

ZONA URBANA QUE COMPREENDE SANTUÁRIO DIOCESANO NOSSA SENHORA DA SAÚDE

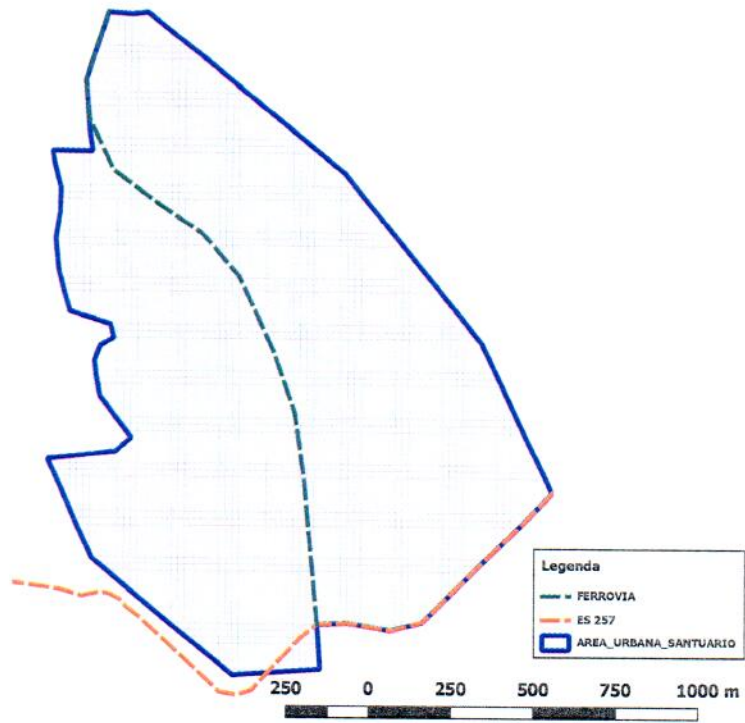




Prefeitura Municipal de Ibiracu

Estado do Espírito Santo

ÁREA URBANA DO SANTUÁRIO
ÁREA: 1.888.197 m² ou 188,81 ha.
PERÍMETRO: 6.078 metros





Prefeitura Municipal de Ibiracú

Estado do Espírito Santo

ANEXO 02

MEMORIAL DESCRITIVO

Perímetro 6.078m

Coordenadas SISTEMA – UTM/DATUM – SIRGAS 2000/ZONA - 24K

**ZONA URBANA QUE COMPREENDE SANTUÁRIO DIOCESANO NOSSA
SENHORA DA SAÚDE**

COORDENADAS DA ÁREA URBANA DO SANTUÁRIO					
PONTOS	SISTEMA	DATUM	ZONA	EASTING	NORTHING
1	UTM	SIRGAS 2000	24K	357479,487	7807435,289
2	UTM	SIRGAS 2000	24K	357552,812	7807429,868
3	UTM	SIRGAS 2000	24K	357599,913	7807435,251
4	UTM	SIRGAS 2000	24K	358201,463	7806949,435
5	UTM	SIRGAS 2000	24K	358615,954	7806438,051
6	UTM	SIRGAS 2000	24K	358829,928	7805987,224
7	UTM	SIRGAS 2000	24K	358438,315	7805596,957
8	UTM	SIRGAS 2000	24K	358341,421	7805570,042
9	UTM	SIRGAS 2000	24K	358209,538	7805592,920
10	UTM	SIRGAS 2000	24K	358118,027	7805588,882
11	UTM	SIRGAS 2000	24K	358127,447	7805448,252
12	UTM	SIRGAS 2000	24K	357860,988	7805429,411
13	UTM	SIRGAS 2000	24K	357433,040	7805785,362
14	UTM	SIRGAS 2000	24K	357297,119	7806082,773
15	UTM	SIRGAS 2000	24K	357503,692	7806106,323
16	UTM	SIRGAS 2000	24K	357551,466	7806149,387
17	UTM	SIRGAS 2000	24K	357456,591	7806272,523
18	UTM	SIRGAS 2000	24K	357444,479	7806333,755
19	UTM	SIRGAS 2000	24K	357439,096	7806381,529
20	UTM	SIRGAS 2000	24K	357457,264	7806427,285
21	UTM	SIRGAS 2000	24K	357498,982	7806450,162
22	UTM	SIRGAS 2000	24K	357488,216	7806489,189
23	UTM	SIRGAS 2000	24K	357365,080	7806527,543
24	UTM	SIRGAS 2000	24K	357345,566	7806596,176
25	UTM	SIRGAS 2000	24K	357331,436	7806652,025
26	UTM	SIRGAS 2000	24K	357322,016	7806748,246
27	UTM	SIRGAS 2000	24K	357335,473	7806831,009
28	UTM	SIRGAS 2000	24K	357336,819	7806903,680



Prefeitura Municipal de Ibiracu

Estado do Espirito Santo

29	UTM	SIRGAS 2000	24K	357316,633	7806983,079
30	UTM	SIRGAS 2000	24K	357311,923	7807014,704
31	UTM	SIRGAS 2000	24K	357433,713	7807013,359
32	UTM	SIRGAS 2000	24K	357423,620	7807073,244
33	UTM	SIRGAS 2000	24K	357412,854	7807228,006